

EECS 16A
Fall 2019

Designing Information Devices and Systems I

Midterm 2 - VERSION A

Exam Location: Soda 320 (DSP) / VERSION C

PRINT your student ID: _____

PRINT AND SIGN your name: _____, _____
(last name) (first name) (signature)

PRINT time of your Monday section and the GSI's name: _____

PRINT time of your Wednesday section and the GSI's name: _____

Name and SID of the person to your left: _____

Name and SID of the person to your right: _____

Name and SID of the person in front of you: _____

Name and SID of the person behind you: _____

1. Tell us about something that makes you happy. (1 Point)

Empty rectangular box for answer to question 1.

2. What courses are you thinking of taking next semester? (1 Point)

Empty rectangular box for answer to question 2.

Do not turn this page until the proctor tells you to do so. You may work on the questions above.

PRINT your student ID: _____

Extra page for scratchwork.
Work on this page will NOT be graded.

PRINT your student ID: _____

Extra page for scratchwork.
Work on this page will NOT be graded.

PRINT your student ID: _____

3. Power (15 points)

In the circuit shown in Figure 3.1 calculate the total power P_d **delivered** by source I_1 to the rest of the circuit.

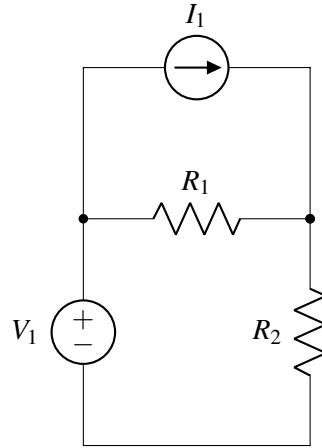


Figure 3.1: Circuit for power calculation

Use the following component values: $R_1 = 2\Omega$, $R_2 = 2\Omega$, $V_1 = 5\text{V}$, $I_1 = -0.5\text{A}$.

PRINT your student ID: _____

Extra page for scratchwork.
Work on this page will NOT be graded.

PRINT your student ID: _____

4. Equivalent Circuit (15 points)

Your friend has characterized the circuit shown in Figure 4.1(a) in the lab by first connecting a voltmeter (represented in Figure 4.1(b) by the letter V in a circle) to terminals $A - B$ to measure V_m , then disconnecting the voltmeter and connecting an ammeter (current meter, represented in Figure 4.1(b) by the letter A in a circle) to measure I_m .

Now they ask for your help designing an equivalent circuit model (looking from terminals A and B) consisting only of a current source I_s and resistor R_s .

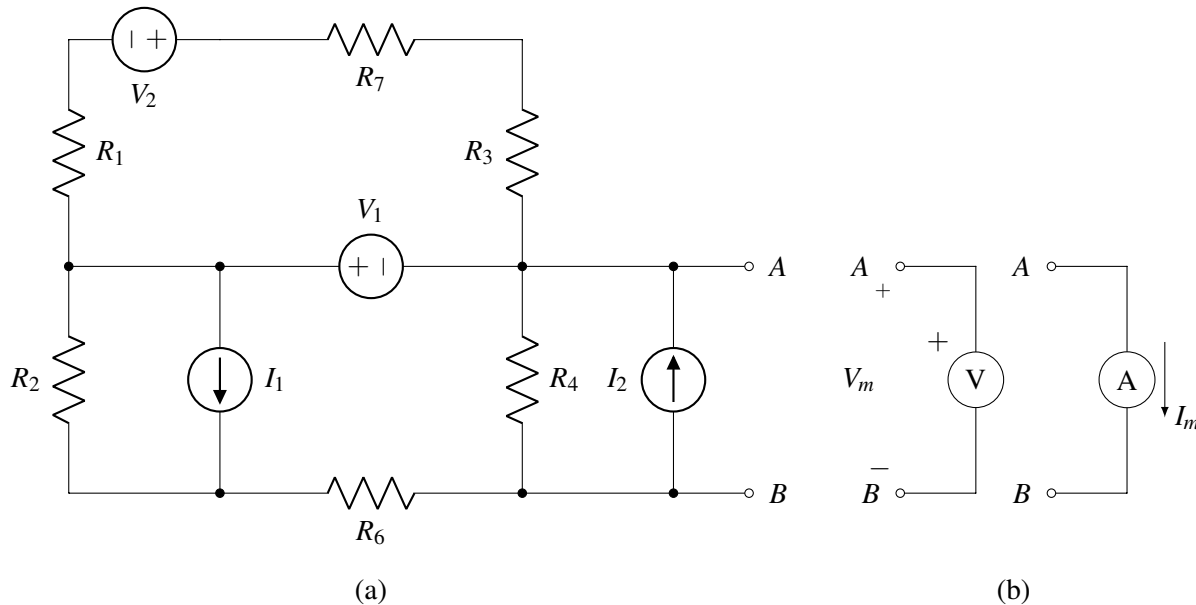
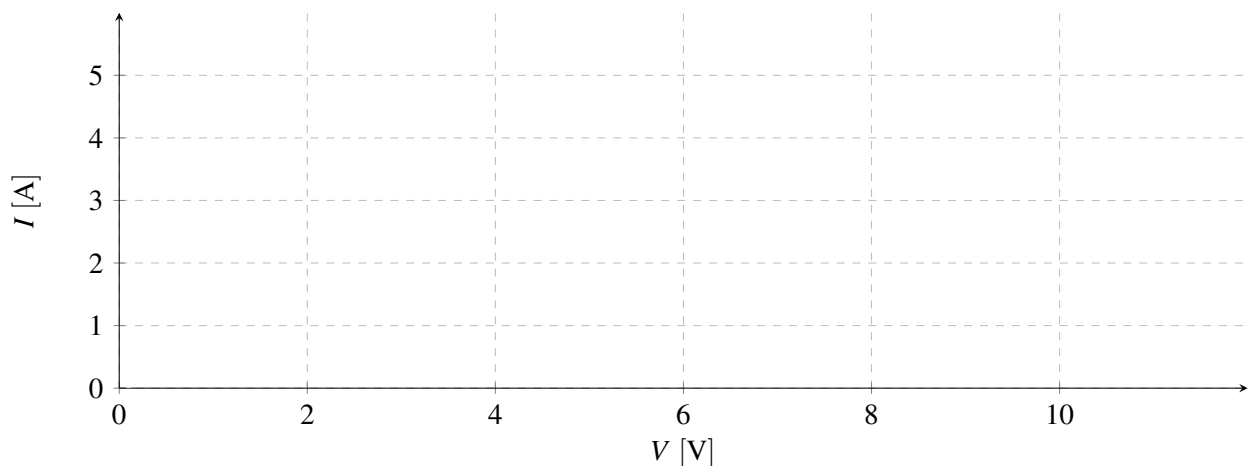


Figure 4.1: (a) Circuit tested in the lab, (b) Circuit used to measure V_m and I_m

Use the following values: $V_m = 6\text{V}$, $I_m = 2\text{A}$.

(a) Draw the I - V characteristic between nodes A , B of the circuit in Figure 4.1(a).

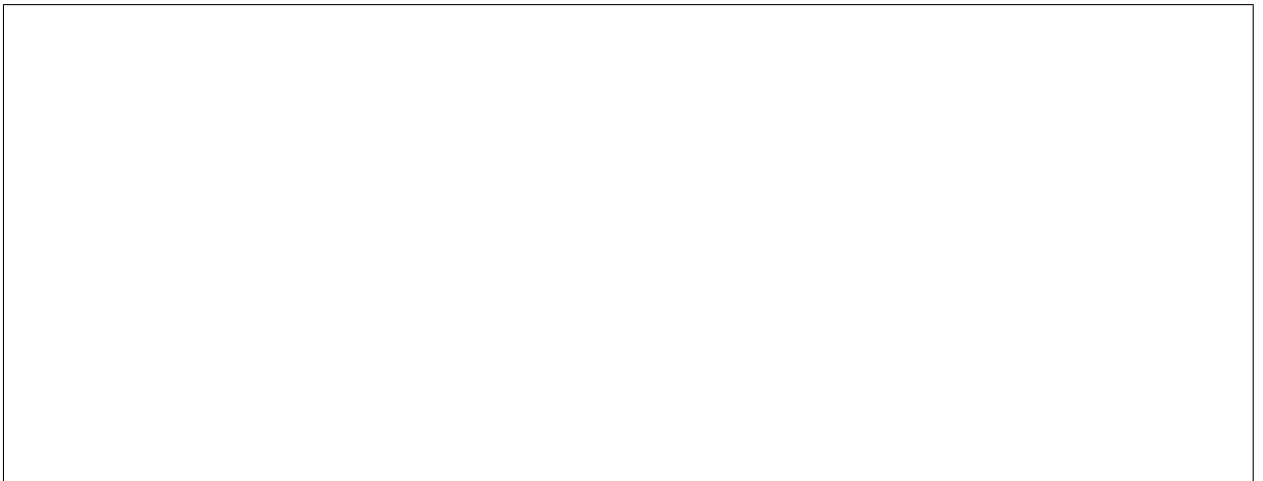


PRINT your student ID: _____

- (b) Draw the circuit diagram of the equivalent model as seen from nodes A , B . Clearly mark nodes A and B , current I_s (including direction), and resistor R_s .



- (c) Calculate the numerical values of I_s and R_s . Mark your calculated component values in the circuit diagram drawn in part (b). Clearly mark the direction of the current.



PRINT your student ID: _____

Extra page for scratchwork.
Work on this page will NOT be graded.

PRINT your student ID: _____

Extra page for scratchwork.
Work on this page will NOT be graded.

PRINT your student ID: _____

5. Next-Phone (15 points)

You have been hired by “Next-Phone”, a promising startup that has developed a 3D printer to produce individually customized smartphones.

Only one problem remains: designing accurate position sensing for the printhead. “No problem,” you tell your new boss, “I’ll take care of that!”

Figure 5.1 shows your design. The printhead is supported by two rollers that move the head in the x direction. Each roller runs on two conductive tracks with resistivities ρ_1 and ρ_2 , respectively, length L , and cross-sectional area A . The rollers are made of metal electrically connecting the strips. The printhead is an insulator (i.e. nonconductive material) so it can be modeled as an open-circuit. Roller 1 and Roller 2 are disconnected by the non-conductive Print Head. You connect two voltage sources of voltage V_S as shown in Figure 5.1. You then measure voltage $V_{AB} = V_A - V_B$ to sense position x .

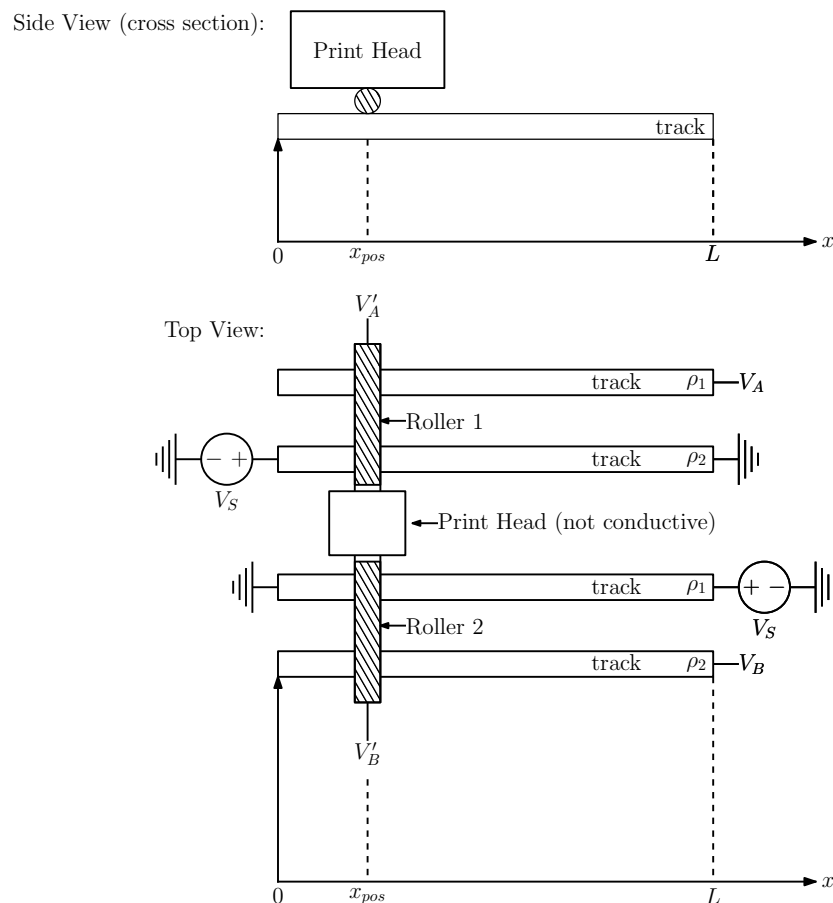
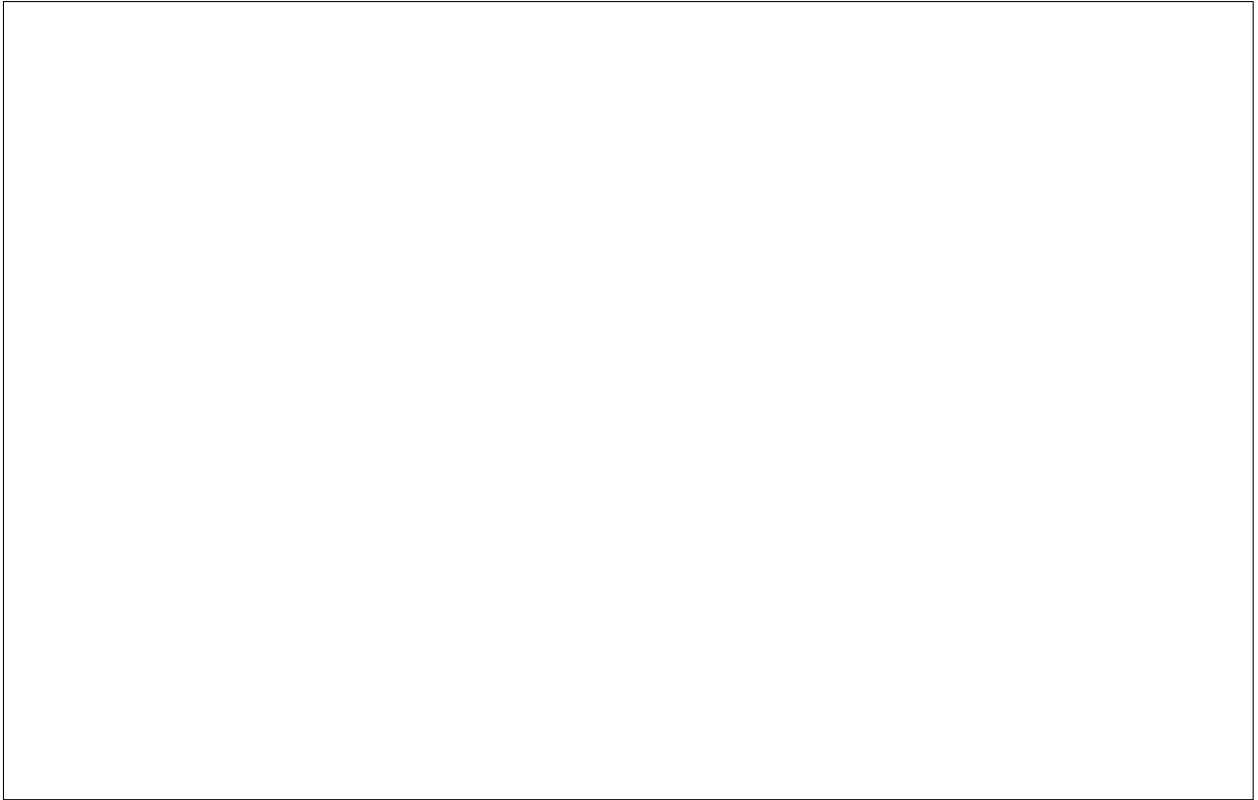


Figure 5.1: 3D printhead position sensor (top and side views)

PRINT your student ID: _____

- (a) Draw an equivalent circuit diagram of Figure 5.1 consisting of sources, resistors, etc.



- (b) Derive algebraic expressions for $V_{AA'} = V_A - V_{A'}$ and $V_{BB'} = V_B - V_{B'}$ as a function of x_{pos} .



PRINT your student ID: _____

- (c) Find the value of voltage $V_{AB}(x_{pos}) = V_A - V_B$ for $V_s = 10\text{V}$, $\rho_1 = 1\ \Omega\text{m}$, $\rho_2 = 2\ \Omega\text{m}$, $L = 200\text{mm}$, $A = 1\text{cm}^2$, and $x_{pos} = 50\text{mm}$.

PRINT your student ID: _____

Extra page for scratchwork.
Work on this page will NOT be graded.

PRINT your student ID: _____

6. Current Sensor (19 points)

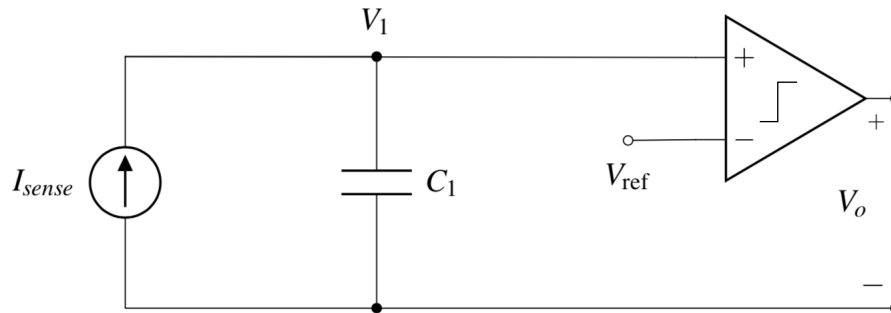


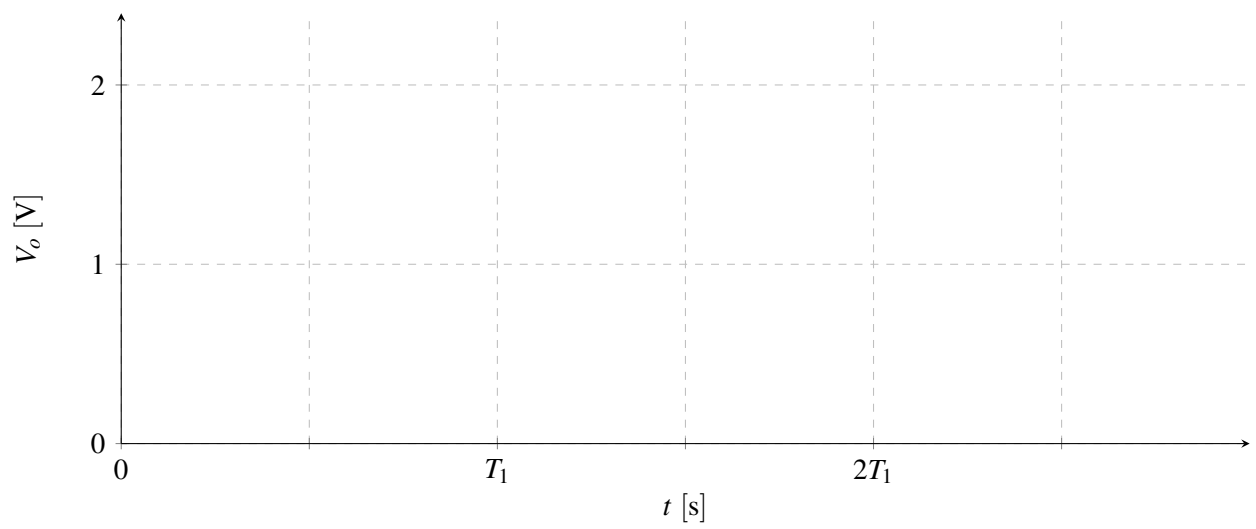
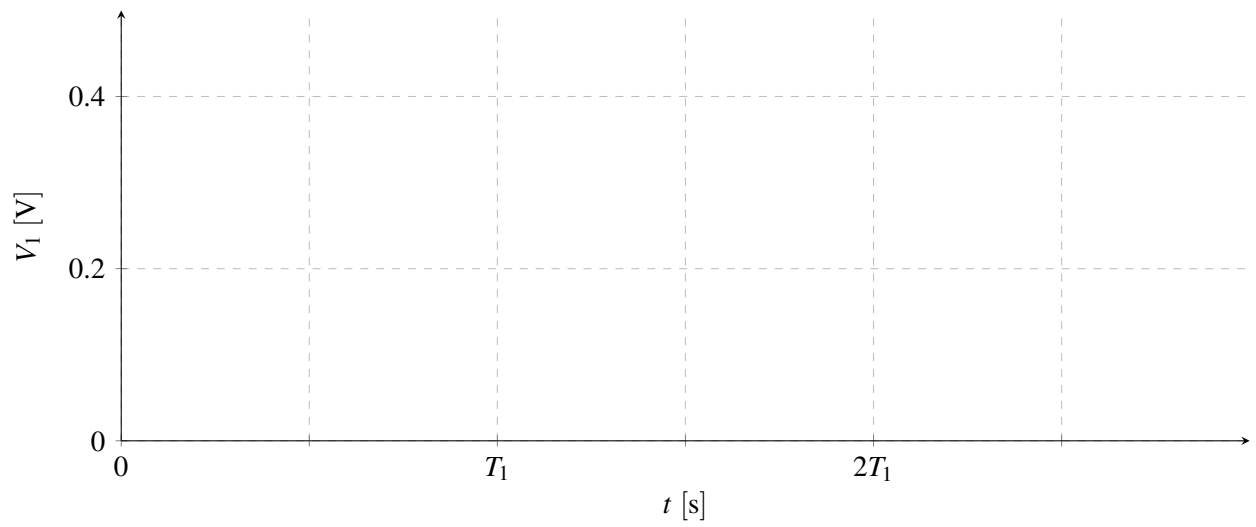
Figure 6.1: First version of the current sensor circuit

- (a) You've built a light sensor that outputs a current I_{sense} that is proportional to light intensity. Now you need a circuit that measures this current. Figure 6.1 shows the design of the first version of the current sensor circuit. At time $t = 0$ capacitor C_1 is discharged and a timer (stop watch) is started. When voltage V_1 reaches V_{ref} the comparator "trips" and stops the timer at T_1 . The output of the comparator is +1V if $V_1 > V_{ref}$, and 0V otherwise.

In the grids below, plot V_1 and V_o as a function of time t , from $t = 0$ to $t = 2T_1$.

Use $I_{sense} = 0.2\text{A}$, $C_1 = 1\text{F}$, and $V_{ref} = 0.2\text{V}$.

PRINT your student ID: _____



PRINT your student ID: _____

PRINT your student ID: _____

- (b) Derive an expression for the time T_1 measured by the timer as a function of I_{sense} , C_1 , and V_{ref} . Then, calculate its numerical value using the same component values as given in part (a).

PRINT your student ID: _____

(c) Figure 6.2 shows an improved current sensor that does not depend on the value of capacitor C_1 .

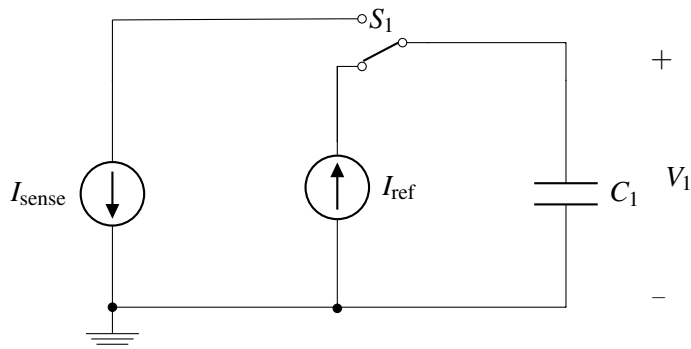
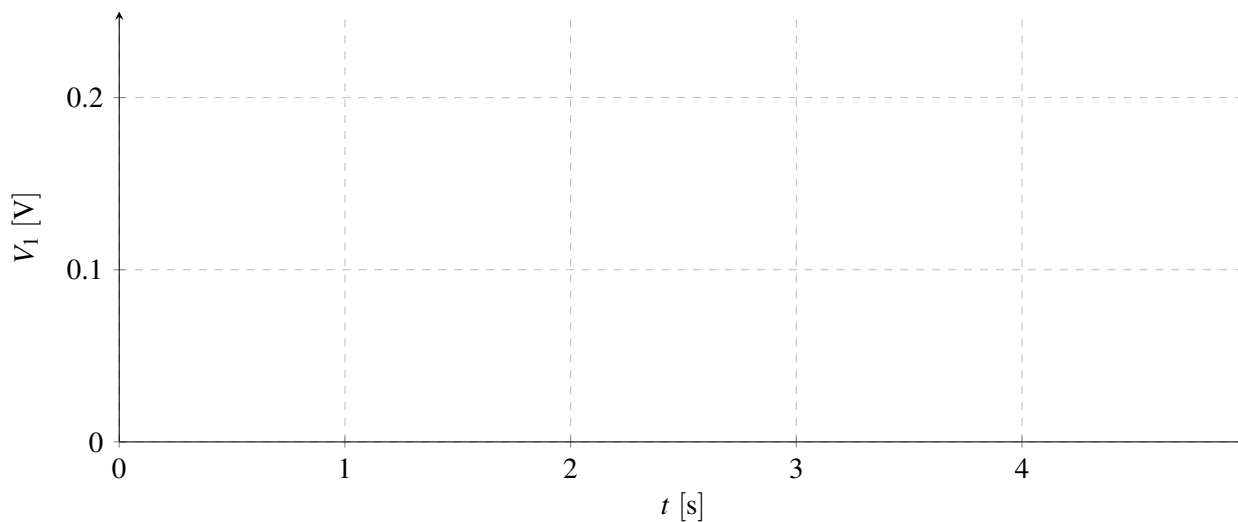


Figure 6.2: Improved Current Sensor

Capacitor C_1 is discharged at time $t = 0$ and switch S_1 is connected to I_{ref} . When V_1 reaches V_{ref} at time T_1 , switch S_1 is disconnected from I_{ref} and connected to I_{sense} instead. T_2 is defined as the time from connecting S_1 to I_{sense} to the moment V_1 reaches 0V.

Plot V_1 versus time from $t = 0$ to $t = T_1 + T_2$.

Use $I_{sense} = 0.2\text{A}$, $C_1 = 1\text{F}$, $V_{ref} = 0.2\text{V}$ and $I_{ref} = 0.1\text{A}$.



PRINT your student ID: _____

- (d) Derive an expression for the ratio $\frac{T_1}{T_2}$ (the times calculated in part (c)) as a function of I_{sense} , I_{ref} , C_1 , and V_{ref} . Then, calculate its numerical value using the same component values as given in part (c).

PRINT your student ID: _____

Extra page for scratchwork.
Work on this page will NOT be graded.

PRINT your student ID: _____

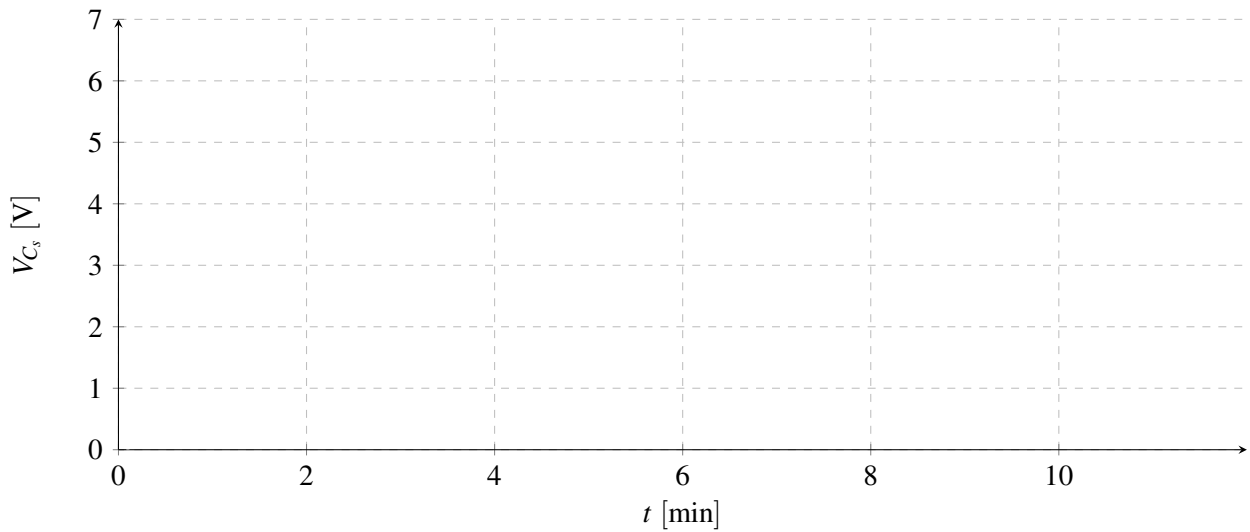
7. Capacitor Powered Quadcopter (15 points)

You've made a fun little quadcopter that juggles 10 colorful balls - all while flying in circles above the heads of its stunned audience that cannot get enough of the spectacle.

Unfortunately it takes quite a bit of time to recharge the battery after each demonstration. To shorten the time you decide to replace the battery with a capacitor C_s which can be charged virtually instantaneously.

The drone consumes a constant current $I_d = 0.5\text{A}$. The nominal supply voltage of the drone is $V_{nom} = 5\text{V}$, but it works with voltages as low as $V_{min} = 4\text{V}$ (i.e. when the capacitor voltage drops below 4V the drone crashes). V_{nom} is the initial voltage across the capacitor C_s .

- (a) Plot the voltage across the capacitor V_{C_s} as a function of time from 0 to 10 minutes in the graph space provided to you below. Use $C_s = 600\text{F}$.



PRINT your student ID: _____

- (b) Calculate the minimum value of the capacitor C_s required to support 10 minutes of flying time.

- (c) Regardless of your answer in (b), assume $C_s = 5\text{F}$. Calculate the ratio of the energy E_2 remaining in the capacitor at the end of the flight divided by the energy E_1 initially stored in the capacitor C_s when it is fully charged.

PRINT your student ID: _____

Extra page for scratchwork.
Work on this page will NOT be graded.

PRINT your student ID: _____

8. Fun with charge sharing (19 points)

- (a) In Figure 8.1, capacitors C_1 and C_2 are charged to V_1 and V_2 and switch S_1 is open for time $t < 0$. At time $t = 0$, switch S_1 is closed. Calculate V_1 at time $t > 0$.

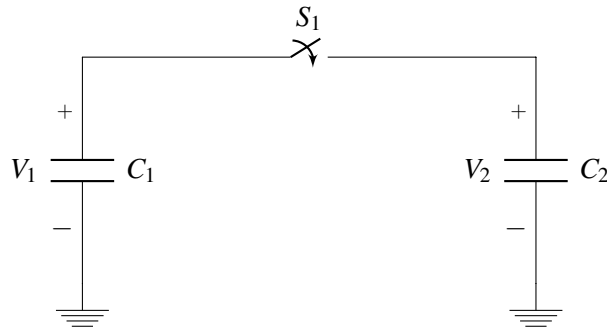


Figure 8.1: Capacitor Charge Sharing

Use the following values: $C_1 = 1\text{F}$, $C_2 = 4\text{F}$, $V_1 = 6\text{V}$, $V_2 = 1\text{V}$.

PRINT your student ID: _____

- (b) The circuit shown in Figure 8.2 operates in two phases. During phase 1, switches labeled S_1 are closed and switches S_2 are open. During phase 2, switches S_1 are open and switches S_2 are closed, as illustrated in the timing diagram shown in Figure 8.3.

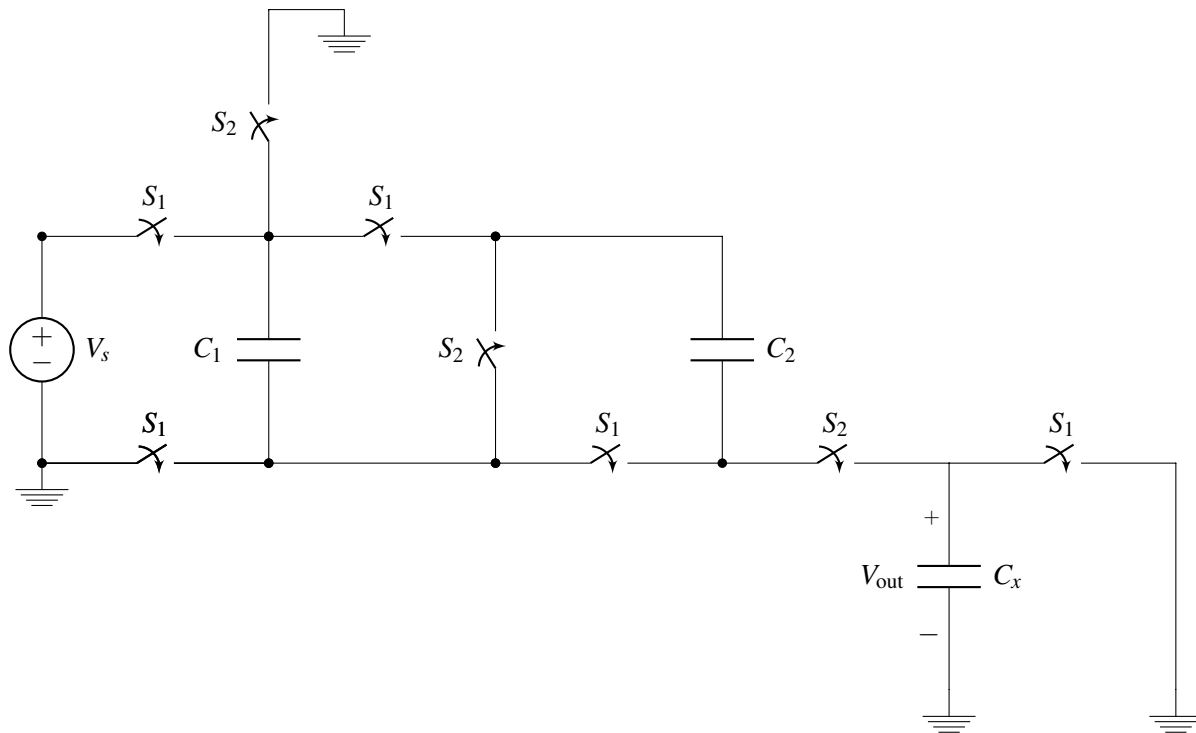


Figure 8.2: Capacitor Charge Sharing

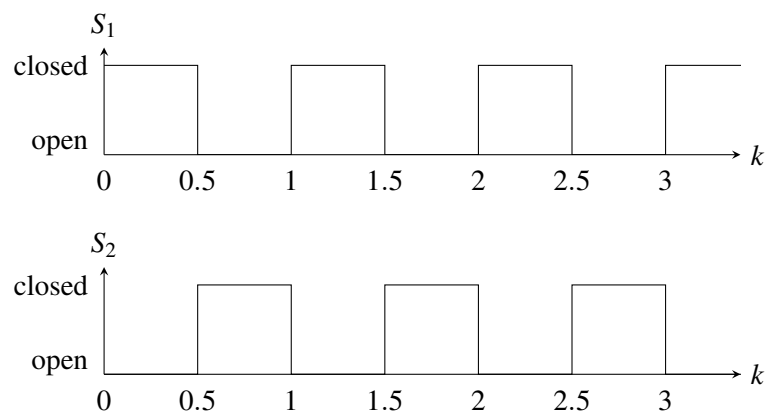


Figure 8.3: Timing diagram for switches

PRINT your student ID: _____

- i. Redraw the circuit during phase 1. Replace closed switches with "wires" and open switches with "open circuits" (i.e. just omit them from the diagram). Use $C_1 = C_2 = C_0$.



PRINT your student ID: _____

- ii. Redraw the circuit during phase 2. Replace closed switches with "wires" and open switches with "open circuits" (i.e. just omit them from the diagram). Use $C_1 = C_2 = C_0$.



PRINT your student ID: _____

- iii. Calculate the value of the voltage V_{out} during phase 2 as a function of C_0 , C_x , and V_s .

PRINT your student ID: _____

Extra page for scratchwork.
Work on this page will NOT be graded.

PRINT your student ID: _____

Extra page for scratchwork.
Work on this page will NOT be graded.

PRINT your student ID: _____

Doodle page!

Draw us something if you want or give us suggestions, compliments, or complaints.
You can also use this page to report anything suspicious that you might have noticed.

Read the following instructions before the exam.

There are 8 problems of varying numbers of points. Not all subparts of a question are related to each other. You have 120 minutes for the exam. The problems are of varying difficulty, so pace yourself accordingly and avoid spending too much time on any one question until you have gotten all of the other points you can.

There are 30 pages on the exam, so there should be 15 sheets of paper in the exam. The exam is printed double-sided. Do not forget the problems on the back sides of the pages! Notify a proctor immediately if a page is missing. **Do not tear out or remove any of the pages. Do not remove the exam from the exam room.**

No collaboration is allowed, and do not attempt to cheat in any way. Cheating will not be tolerated.

Write your student ID on each page before time is called. If a page is found without a student ID, we are not responsible for identifying the student who wrote that page.

You may consult ONE handwritten $8.5'' \times 11''$ note sheet (front and back). No phones, calculators, tablets, computers, other electronic devices, or scratch paper are allowed.

Please write your answers legibly in the boxed spaces provided on the exam. The space provided should be adequate. **If you still run out of space, please use a blank page and clearly tell us in the original problem space where to look for your solution.**

Show all of your work in order to receive full credit. Partial credit will be given for substantial progress on each problem.

If you need to use the restrooms during the exam, bring your student ID card, your phone, and your exam to a proctor. You can collect them once you return from the restrooms.

Our advice to you: if you can't solve the problem, state and solve a simpler one that captures at least some of its essence. You might get some partial credit, and more importantly, you will perhaps find yourself on a path to the solution.

Good luck!

Do not turn this page until the proctor tells you to do so.