

**University of California at Berkeley**  
**Department of Physics**  
**Physics 7A, Lecture Section 2, Fall 2017**  
Michael DeWeese

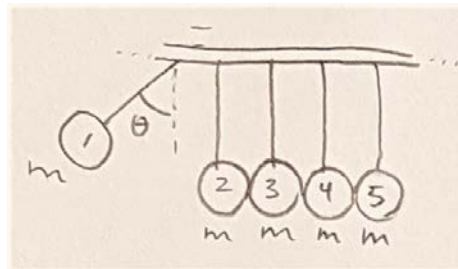
Final Exam  
11:30 am, December 11, 2017

You will be given 180 minutes to work this exam. No books are allowed, but you may use one double-sided, handwritten formula sheet no larger than an 8 ½" by 11" sheet of paper. No electronics that can send or receive wirelessly are allowed, but you may use a calculator if you want (won't help much...). Your description of the physics involved in a problem is worth significantly more than any numerical answer. Show all work, be careful with signs, and take particular care to explain what you are doing. Please express your answers using the symbols provided in the problem descriptions or define any new symbols you use, tell us why you're writing any new equations, and clearly label any drawings that you make. Write your answers in a blue book (or green book), and do not use any extra scratch paper. Please **BOX** your answers and use a pencil or a blue or black pen. Good luck!

1) (25 points) Newton's Cradle

A "Newton's Cradle" is a toy consisting of 5 steel balls suspended by strings from a metal frame as shown in the diagram (usually, each ball is suspended from two strings, but for this problem assume there is only 1 string per ball). Each of the balls has diameter  $R$  and mass  $m$ , and the strings are each of length  $L$ . The 1<sup>st</sup> ball (*i.e.*, the one on the far left) is pulled back and released from rest so that the string supporting it is under tension throughout the ball's motion; the other 4 balls are all holding still during this time. You may assume  $R \ll L$ .

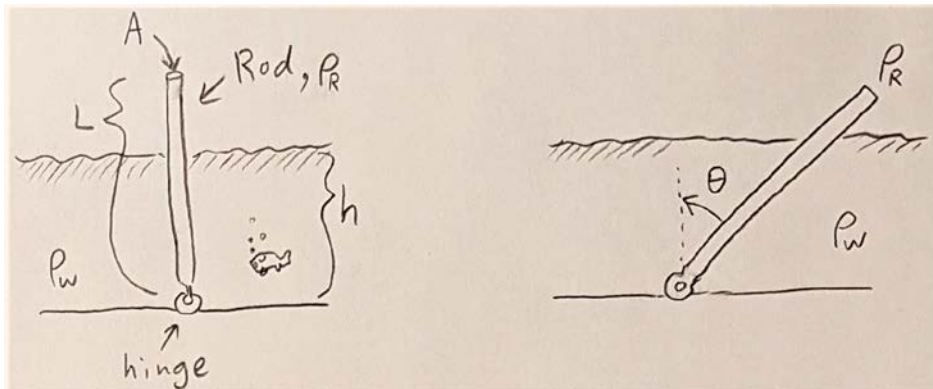
- If the magnitude of the momentum of the 1<sup>st</sup> ball is  $p_1$  immediately before it strikes the 2<sup>nd</sup> ball, then what was the initial angle  $\theta$  between the string and the vertical as viewed in the diagram? Express your answer in terms of any subset of  $p_1$ ,  $m$ ,  $R$ ,  $L$ , and any relevant physical constants.
- What is the tension in the string supporting the 1<sup>st</sup> ball immediately before it strikes the 2<sup>nd</sup> ball? Express your answer in terms of any subset of  $p_1$ ,  $m$ ,  $R$ ,  $L$ , and any relevant physical constants.
- How long does it take for the 1<sup>st</sup> ball to swing from rest until it hits the 2<sup>nd</sup> ball? Express your answer in terms of any subset of  $p_1$ ,  $m$ ,  $R$ ,  $L$ , and any relevant physical constants. You may assume that  $\theta \ll 1$ .
- After the collision, the first 4 balls are stationary but what is the speed of the 5<sup>th</sup> ball at the far right? As always, show your work or justify your answer.
- Now suppose that the experiment is repeated, but this time an insect climbs in between the two balls at the far right so that when the 1<sup>st</sup> ball collides into the 2<sup>nd</sup> ball, some of the initial kinetic energy of the 1<sup>st</sup> ball goes into squashing the insect. If the two balls on the far right are the only balls moving after that collision, and if the 4<sup>th</sup> ball is moving at a speed  $v_{4f} = \frac{1}{4} p_1/m$  immediately after the collision, then what is the **speed** of the 5<sup>th</sup> (last) ball immediately after the collision? You may assume the insect has negligible mass.



2) (20 points) Buoyant Force

A long thin plastic rod of length  $L$  and cross-sectional area  $A$  is attached at one end to a hinge at the bottom of a tank of water, as shown in the left diagram. The depth of the water is  $h$ , which is less than  $L$ . The hinge is frictionless so that the rod is free to rotate.

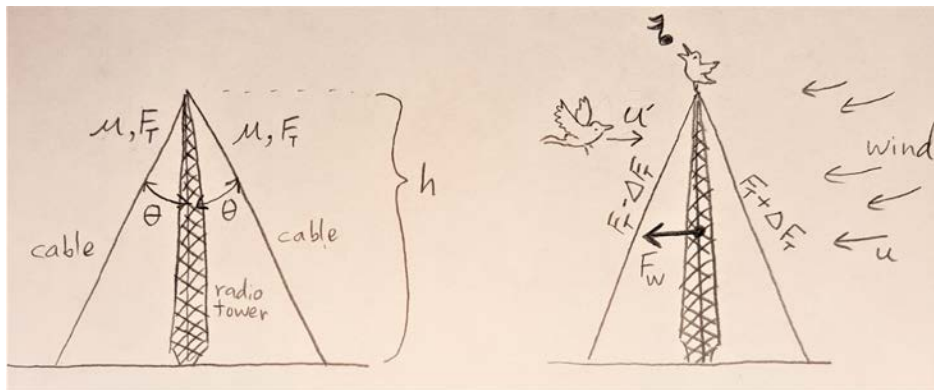
- For the case in which the rod's density is low enough so that it is oriented at an angle  $\theta > 0$  as shown in the diagram, draw an "extended" free body diagram of the rod indicating where every external force is acting on the rod.
- What is the maximum possible value for the density of the rod  $\rho_{R,max}$  such that the rod will be oriented vertically in stable equilibrium? Express your answer in terms of  $h$ ,  $L$ , and the density of water  $\rho_w$ .
- Now consider the case in which the rod's density  $\rho_R$  satisfies  $\rho_w > \rho_R > \rho_{R,max}$  so that the rod still floats, but at an angle  $\theta$  with respect to the vertical, as shown in the second diagram. What is  $\theta$  in this case? Express your answer in terms of  $h$ ,  $L$ ,  $\rho_R$ , and  $\rho_w$ .
- In this case, what is the **direction** and **magnitude** of the force from the hinge on the rod?



3) (25 points) Radio Tower

The top of a radio tower of height  $h$  is held in place by two cables attached to the ground on either side of the tower, each cable forming an angle  $\theta$  with the vertical tower, as shown in the diagram. Each of the cables has linear mass density  $\mu$  (in units of kg/m) and tension  $F_T$ .

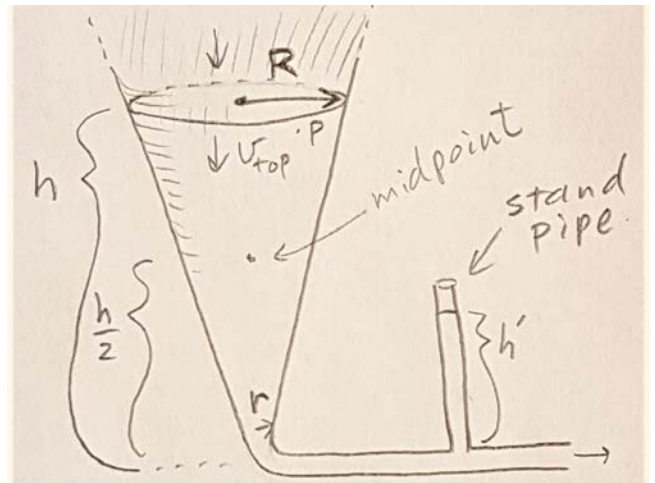
- What is the lowest resonant frequency  $f_1$  (i.e., the fundamental frequency) for either of the cables? Express your answer in terms of  $h$ ,  $\theta$ ,  $\mu$ , and  $F_T$ .
- Now the wind starts to blow, exerting a **leftward** force  $F_W$  on the **middle** of the tower so that the tension of the left cable is decreased while the tension in the right cable is increased. By how much  $\Delta F_T$  does the tension in the right cable increase, assuming that the left cable decreases by the same amount? (Hint: treat the bottom of the tower as a hinge.) Express your answer in terms of  $h$ ,  $\theta$ , and  $F_W$ .
- What is the resulting **beat frequency** heard by an observer standing near the tower listening to the notes produced by both cables at the same time? You may express your answer in terms of  $F_T$ ,  $\Delta F_T$ ,  $h$ ,  $\theta$ , and  $\mu$ .
- If the wind speed is  $u$ , and the speed of sound is  $v$ , then what is the **wavelength** of the sound emitted by a singing bird on top of the tower as measured by an observer comoving with the air that is downstream (i.e., to the left) of the tower? You may express your answer in terms of  $u$ ,  $v$ , and frequency  $f_B$  the bird's note as heard by the bird itself.
- If a second bird is flying **towards the tower from the left** with speed  $u'$  **with respect to the ground**, then what frequency does that bird hear when it listens to the first bird? Express your answer in terms of  $u$ ,  $u'$ ,  $v$ , and  $f_B$ .



4) (25 points) Steady State Flow in a Conical Pipe

Water is flowing downward through a vertical pipe that is conical in shape, as shown in the diagram. The pipe has a height  $h$  and it has a circular cross section everywhere. It is widest at the top, with a radius of  $R$ , and it tapers linearly to a small radius  $r$  at the bottom, where the pipe bends to form a horizontal section with uniform radius  $r$ . At every point along this pipe, water is flowing at a steady rate. There is also a stand pipe, which is open to the atmosphere at the top, sticking up out of the horizontal section of the pipe. For the first 4 parts of the problem, you may neglect viscosity.

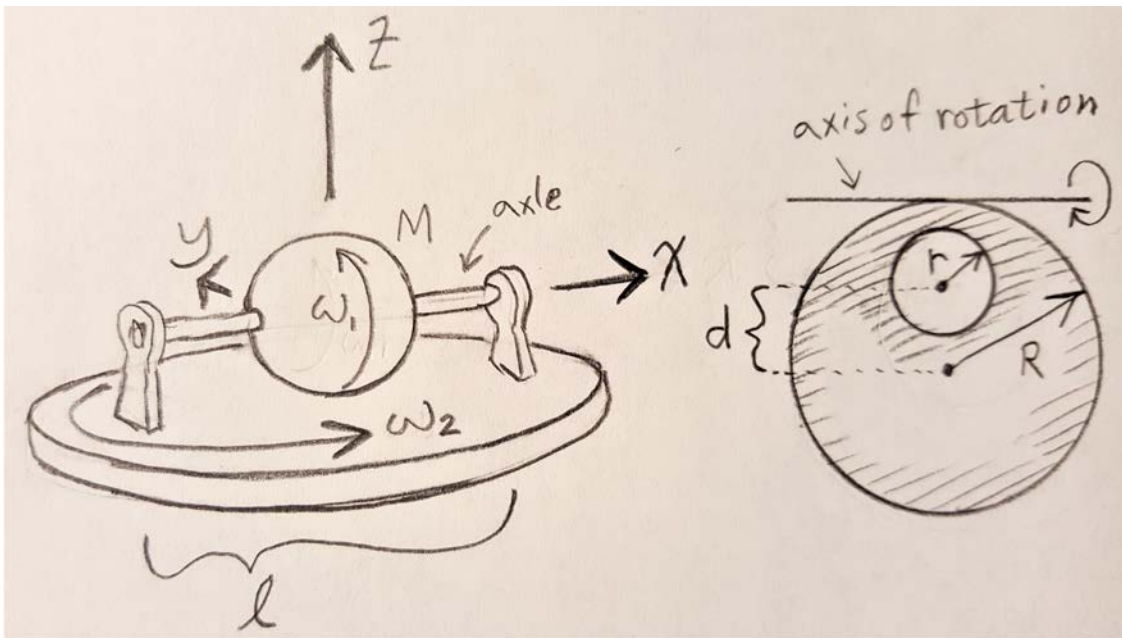
- If the pressure in the top part of the pipe  $P$  is **the same** as the pressure in the horizontal section of the pipe, then what is  $R$  expressed in terms of  $r$ ,  $h$ , the speed  $v_{top}$  of water entering the top part of the vertical pipe, and any relevant physical constants? You may assume  $R \gg r$  throughout this problem.
- What is the speed of the water passing through the midpoint of the vertical section of pipe? Express your answer in terms of  $v_{top}$ .
- Is the pressure in the midpoint of the vertical section of pipe **larger, smaller, or the same** as  $P$ , the pressure at the top and bottom of the pipe? Show your work or justify your answer.
- What is the **height  $h'$**  of the water column in the standpipe? Express your answer in terms of any subset of  $R$ ,  $r$ ,  $h$ ,  $v_{top}$ ,  $P$ , and any relevant physical constants.
- Consider the same physical system, but now viscosity results in a loss of 10% of the water's energy as it travels from the top of the vertical pipe to a point in the horizontal section of the pipe just below the standpipe. What is the **speed** of the water in the horizontal section of the pipe right below the standpipe? Express your answer in terms of any subset of  $R$ ,  $r$ ,  $h$ ,  $v_{top}$ , and any relevant physical constants.



5) (25 points) Spinning sphere

The axle passing through the center of a solid sphere of uniform density is mounted on supports that rest on a rotating turntable as shown in the diagram. The sphere, with radius  $R$  and mass  $M$ , has angular velocity  $\omega_1$  about its axle, and the turntable and sphere have angular velocity  $\omega_2$  about a vertical axis. Note arrows showing these motions in the figure. Take the  $z$  axis vertically upward and the direction of the axle at the moment shown to be the  $x$  axis pointing to the right. Take the direction perpendicular to that of the axle at the moment shown to be the  $y$  axis pointing into the page. Recall that a uniform density sphere has a moment of inertia  $I = \frac{2}{5} MR^2$  as measured about an axis passing through the center of the sphere.

- If  $\omega_2 \ll \omega_1$ , what is the **direction and magnitude** of the torque on the sphere at the moment shown in the diagram needed to maintain this motion? Express your answer in terms of  $M$ ,  $R$ ,  $\omega_1$ , and  $\omega_2$ .
- Now do **not** assume  $\omega_2 \ll \omega_1$ . What is the resulting **angular momentum** of the sphere at the moment shown in the diagram? Express your answer as a **vector** in terms of any subset of  $M$ ,  $R$ ,  $\omega_1$ , and  $\omega_2$ .
- In this case, what is the magnitude of the torque on the sphere at the moment shown?
- What is the magnitude of the force exerted by the turntable on each end of the axle in order to maintain this motion? The total length of the axle is  $\ell$ . Express your answer in terms of any subset of  $M$ ,  $R$ ,  $\omega_1$ ,  $\omega_2$ , and  $\ell$ .
- If a spherical hole of radius  $r$  centered a distance  $d$  from the center of the original sphere is cut out of the sphere, then what is the moment of inertia of this object about an axis tangent to the surface of the original sphere at the point closest to the hole, as shown in the second diagram? Express your answer in terms of  $M$ ,  $R$ , and  $d$ .



CONTINUED NEXT PAGE (6 problems total)

6) (25 Points) Dr. Maybe

A secret agent working for the British government has tracked down a master criminal called “Dr. Maybe”. Using a powerful handgun, the agent shoots a bullet horizontally with speed  $v_B$ ; the bullet misses Dr. Maybe and hits a coat rack that is initially standing still on the **frictionless** tile floor a horizontal distance  $D$  behind Dr. Maybe, as shown in the diagram. Upon impact, the bullet lodges in the coat rack a height  $h$  above the ground (*i.e.*, the bullet gets stuck in the coat rack). The bullet has mass  $m_B$  and the coat rack has mass  $M_R$ ; you may assume  $M_R \gg m_B$ , and also that the bullet is moving so fast that its velocity remains horizontal until it hits the coat rack. The coat rack is essentially a thin pole of uniform mass density and height  $H$ .

- If  $h = \frac{1}{2}H$ , what is the magnitude of the **impulse** to the coat rack resulting from the collision with the bullet? Express your answer in terms of any subset of  $m_B, M_R, v_B$ .
- If  $h = \frac{1}{2}H$ , what is the **work** done by the bullet on the coat rack during the collision?
- For  $0 \leq h \leq \frac{1}{2}H$ , what is the **angular momentum** of the **bullet** before it strikes the coat rack using the coat rack’s center of mass as the origin? Indicate whether the angular momentum points into the page or out of the page as viewed in the diagram.
- If the agent shoots the bullet very close to the ground so that  $h = 0$ , what is the **angular velocity** of the coat rack after the collision?
- If  $h = 0$ , what is the **largest possible value for  $D$**  such that the coat rack hits Dr. Maybe on the top of his head? Dr. Maybe’s head is  $\frac{1}{2}H$  above the ground. You may assume that the bullet’s momentum is so large that you can neglect the effect of gravity on the coat rack throughout this process. Express your answer in terms of  $H$ .

